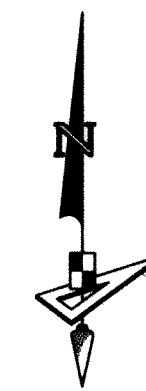


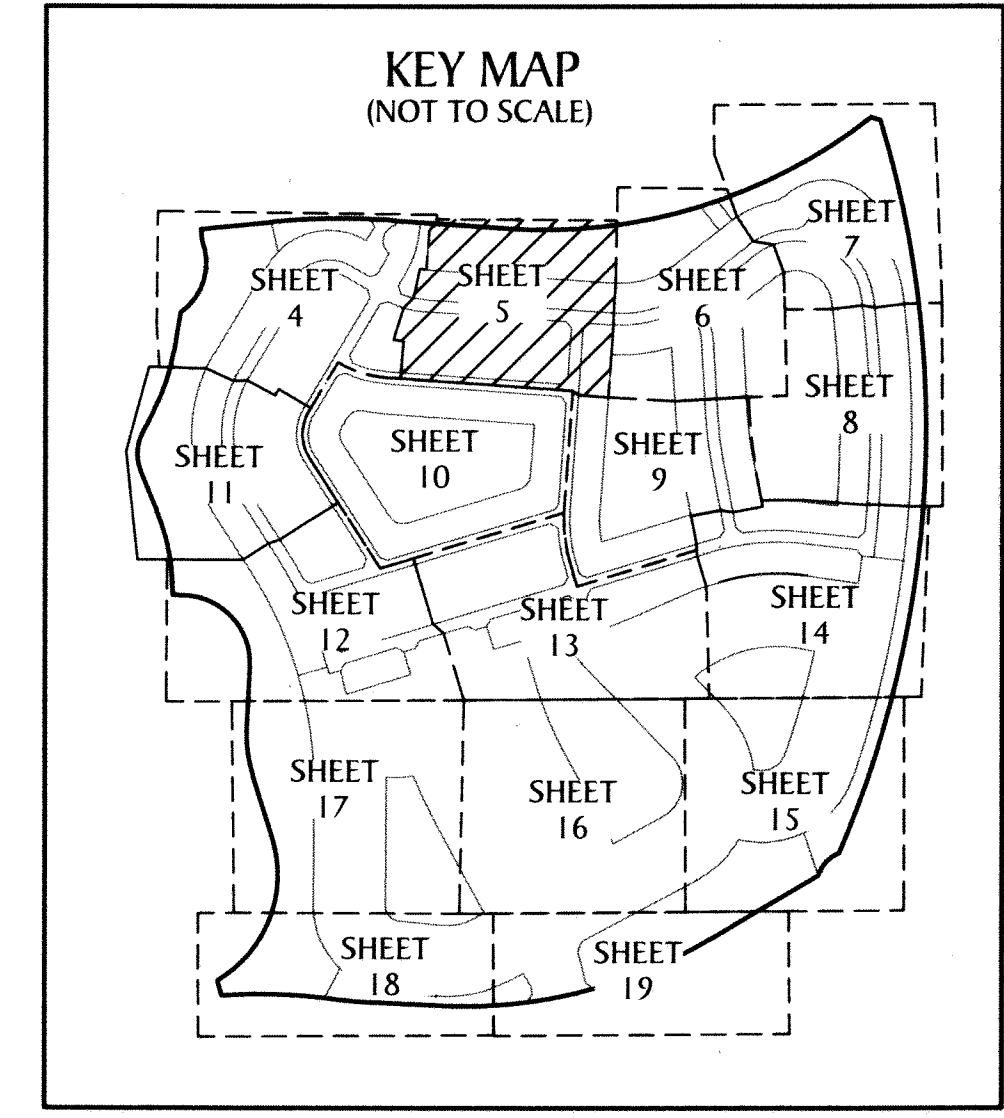
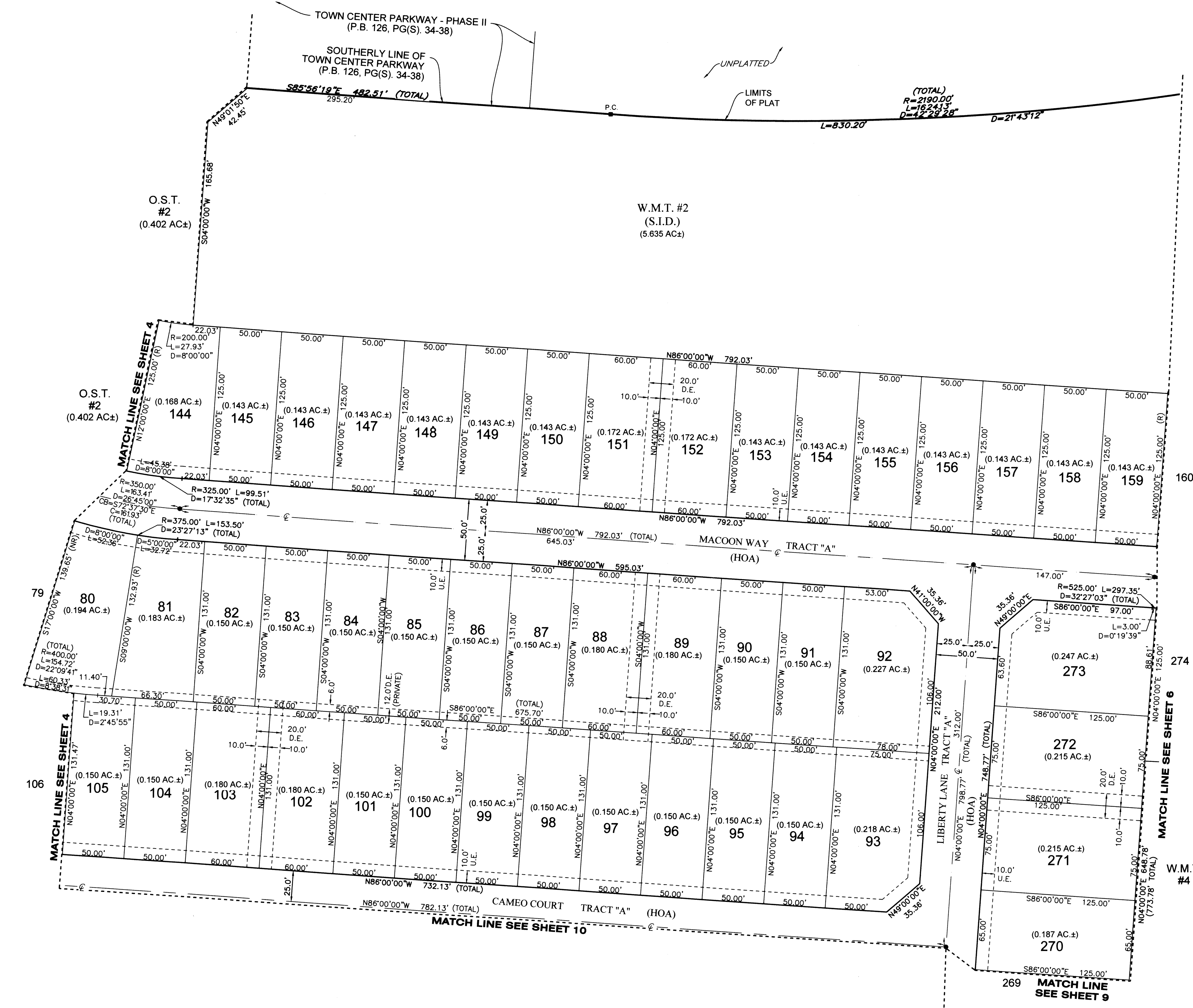
ORCHARDS OF WESTLAKE - PHASE I

BEING PORTIONS OF SECTIONS 5, 6, 7 AND 8, ALL IN
TOWNSHIP 43 SOUTH, RANGE 41 EAST,
CITY OF WESTLAKE, PALM BEACH COUNTY, FLORIDA.



SCALE 1" = 40'
0 20 40 80
SEE NOTE ON SHEET 2
FOR BASIS OF BEARINGS

196



- LEGEND**
- P.O.B. --- POINT OF BEGINNING
 - P.O.C. --- POINT OF COMMENCEMENT
 - P.B. --- PLAT BOOK
 - D.B. --- DEED BOOK
 - O.R./O.R.B. --- OFFICIAL RECORDS BOOK
 - PG./PG(S) --- PAGE(S)
 - NAD --- NORTH AMERICAN DATUM
 - W.M.T. --- WATER MANAGEMENT TRACT
 - O.S.T. --- OPEN SPACE TRACT
 - P.B.C. --- PALM BEACH COUNTY
 - U.E. --- UTILITY EASEMENT
 - D.E. --- DRAINAGE EASEMENT
 - L.M.A.E. --- LAKE MAINTENANCE ACCESS EASEMENT
 - 7-43-41 --- SECTION-TOWNSHIP-RANGE
 - R --- RADIUS
 - L --- ARC LENGTH
 - D --- DELTA ANGLE
 - CB --- CHORD BEARING
 - C --- CHORD
 - N.T. --- NON-TANGENT
 - N.T.C. --- NON-TANGENT CURVATURE
 - P.C. --- POINT OF CURVATURE
 - P.T. --- POINT OF TANGENCY
 - R/W --- RIGHT-OF-WAY
 - (R) --- RADIAL
 - (NR) --- NON-RADIAL
 - HOA --- HOMEOWNERS ASSOCIATION
 - S.I.D. --- SEMINOLE IMPROVEMENT DISTRICT
 - PRM --- PERMANENT REFERENCE MONUMENT
 - --- PERMANENT CONTROL POINT
 - --- FOUND PERMANENT REFERENCE MONUMENT
 - --- SET 4"x4" CONCRETE MONUMENT WITH 2" ALUMINUM DISK STAMPED "PRM LB 7768"



4152 W. Blue Heron Blvd. Phone: (561) 444-2720
Suite 105 www.geopointsurvey.com
Riviera Beach, FL 33404 Licensed Business Number LB 7768